

EVA LVU01

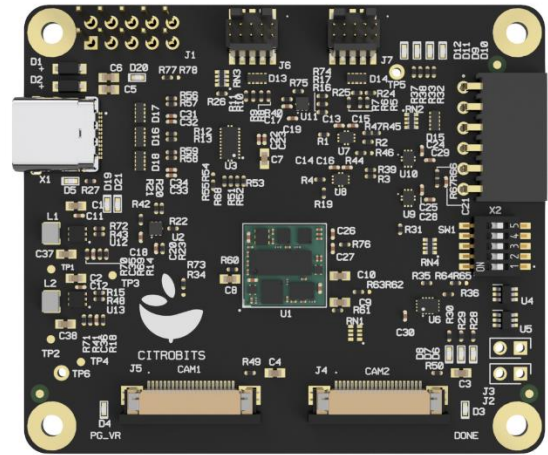
May 24

Overview

The evaluation shield allows for easy connection to popular single board computers like the Raspberry Pi Model B in order to extend its capabilities offering a video-to-USB 3.2 bridge for two cameras or displays. Additionally, there is 256Mb of on-chip memory available for the user.

All Features

- RaspberryPi HAT format
- Standard 22x Pin MIPI connector
- USB Type-C Connector
- USB 3.2 (5Gbps) capable
- Up to 2x Camera/Display Interfaces
- Frame Buffer: 2x128MBit
- Supported standards OpenLDI, CSI, DSI, LVDS, SLVS, Parallel
- Dual Bitstream boot
- Single Supply operation
- MCU for user-specific configuration
- Optional PMOD interface

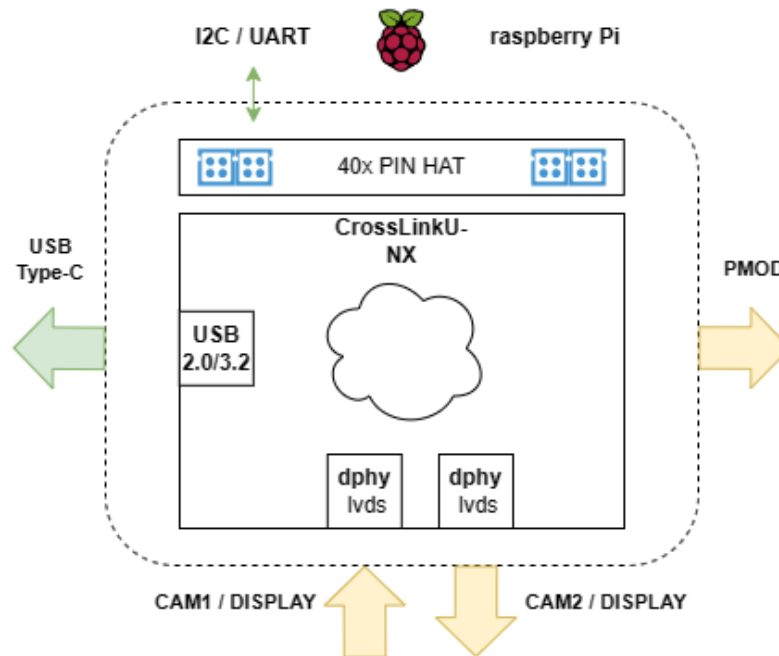


Specification

Form Factor	65 x 56 (mm) Raspberry Pi Model B compatible HAT
Connectivity	22x Pin CSI - Raspberry Pi Zero pinout 2x Camera/Display RX/TX Ports USB Type-C
Video	2x 2-Lane Soft D-PHY CSI/DSI Ports (up to 1.2Gbps/Lane)
USB	USB 2.0 (480Mbps) USB 3.2 Gen 1 (5Gbps)
Memory	8-Bit Frame Buffer: 2x128MBit
GPIO	HAT-compatible 10-pin IO header
Power	5V DC via GPIO header or USB connector
Environment	Operating temperature 0–60°C (-40...+85°C *)

*on request

Block Diagram



Applications

- Video Aggregation. Merge multiple video streams in a single USB interface
- Video grabber from image sensor to USB
- Video Rotation
- Advanced ISP
- Sensor Fusion
- Image Overlay
- ML Ready

Targeted Platforms

- RaspberryPi
- NVIDIA Jetson

Ordering Information

Description	Ordering Part Number
Evaluation Board	EVA LVU01 ES0
Evaluation Kit	EVA LVU01 KIT
- Evaluation kit	
- USB-C Power Adapter	
- JTAG Adapter to Lattice Programmer HW-USBN-2B	