

# EVA LVM01

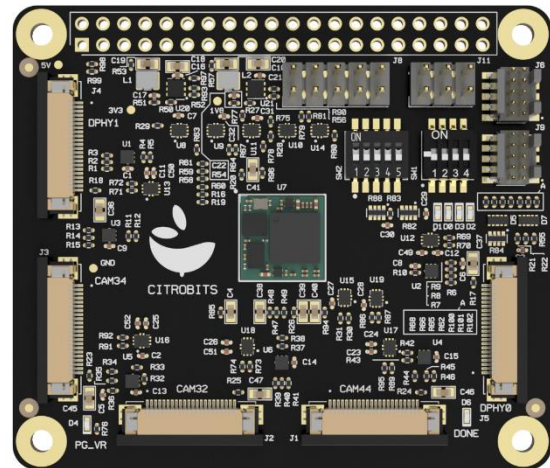
May 24

## Overview

The evaluation shield allows for easy connection to popular single board computers like the Raspberry Pi Model B and in order to extend its capabilities offering several expandable Video Interfaces for Camera and Display.

## All Features

- RaspberryPi HAT format
- Standard 22x Pin MIPI connector
- Up to 8x Camera/Display Interfaces
- Supported standards OpenLDI, CSI, DSI, LVDS, SLVS, Parallel
- Dual Bitstream boot
- Single Supply operation
- MCU for user-specific configuration

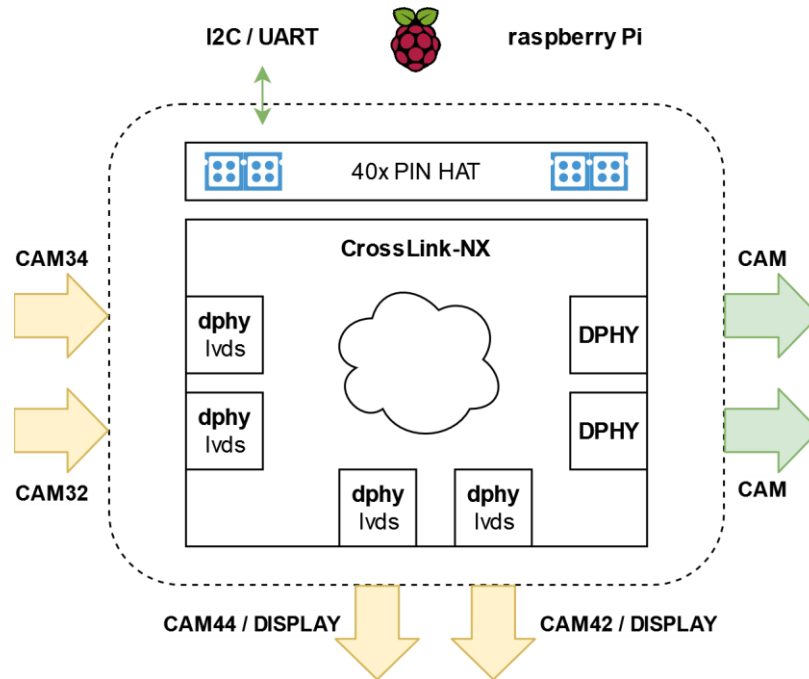


## Specification

Form Factor	65 x 56 (mm) Raspberry Pi Model B compatible HAT
Connectivity	22x Pin CSI - Raspberry Pi Zero pinout 5x Camera/Display RX/TX Ports
Video	2x 4-Lane Hard D-PHY CSI Ports (up to 2.5Gbps/Lane) 2x 4-Lane Soft D-PHY CSI/DSI Ports (up to 1.5Gbps/Lane) 2x 2-Lane Soft D-PHY CSI/DSI Ports (up to 1.5Gbps/Lane)
GPIO	HAT-compatible 40-pin IO header
Power	5V DC via GPIO header
Environment	Operating temperature 0–60°C (-40...+85°C *)

\*on request

## Block Diagram



## Applications

- Video Aggregation. Merge multiple video streams in a single CSI interface
- Video Interface Bridge. SLVS/LVDS to CSI, CSI to DSI, Parallel to CSI/DSI, etc...
- Video Cloning/Mirroring. Duplicate video content from input to multiple displays
- Video Pre-Processing(ISP). Image rotation, lens corrections, color space conversion, ...
- Video pattern generators for custom test equipment
- Video grabber from image sensor to USB, Ethernet, etc...

## Targeted Platforms

- RaspberryPi
- NVIDIA Jetson

## Ordering Information

Description	Ordering Part Number
Evaluation Board	EVA LVM01A ESO
Evaluation Kit	EVA LVM01A KIT
- Evaluation kit	
- USB-C Power Adapter	
- JTAG Adapter to Lattice Programmer HW-USBN-2B	